

Mackintosh

BOOKCASES

Geometries and chromatic games distinguish the iconic Mackintosh double-sided bookcase, a contemporary piece of furniture with decorative allure, worthy of a starring role in any living space. Proposed in a new version that combines the black chrome of the structure with the smoky grey Tay wood of the cubes, the bookcase characterizes the setting with its bold charm.



Bookcase with 25x25 mm square tubular structure in metal, painted in Black Chrome, with retractable connectors and beams closing the structure thus providing major stability.

Base in Tay veneered multilayer wood dyed Smokey Grey.

Cubes in Tay veneered multilayer wood dyed Smokey Grey, with different dimensions and distances.

The cubes are fixed to the metal tubes of the structure with hidden pins.

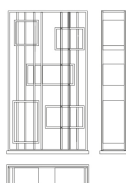
BOOKCASES

Bookcase with 25x25 mm square tubular structure in metal, painted in the finishings from Gianfranco Ferré Home Collection, with retractable connectors and beams closing the structure thus providing major stability.

Base in Tay veneered multilayer wood dyed in the finishings from Gianfranco Ferré Home Collection.

Cubes in Tay veneered multilayer wood dyed in the finishings from Gianfranco Ferré Home Collection, with different dimensions and distances.

The cubes are fixed to the metal tubes of the structure with hidden pins.



MKT.241.A

Bookcase

Standard features

L 135 D 40 H 235 cm

L 53.15 D 15.75 H 92.52 in